

# ENVIROLINE® SERIES TROUGH JUNCTION ENCLOSURES

## Application

Designed to house electrical controls, instruments and components used in an indoor or outdoor environment to provide a degree of protection for the equipment inside the enclosure against ingress of solid foreign objects (falling dirt); and provide a degree of protection with respect to the harmful effects on the equipment due to the ingress of water (rain, sleet, snow). For installation information, consult our installation manual at [www.saginawcontrol.com](http://www.saginawcontrol.com).

## Construction

- 0.063" carbon steel.
- Seams continuously welded and ground smooth.
- Flange trough collar around all sides of door opening.
- Pour in place oil and water resistant gasket.
- Standoffs provided for mounting optional subpanels.
- Removable hinges.
- Doors open 180 degrees.
- Black mini quarter turn latches.
- Latches are opened or closed with a screwdriver.
- Sealing washers and hole plugs included.
- Ground stud on door and body.
- Mounting feet included.
- Padlocking or keylocking latches, and tamper-resistant hardware are available.

## Finish

ANSI-61 gray powder coated inside and out. Optional subpanels powder coated white.

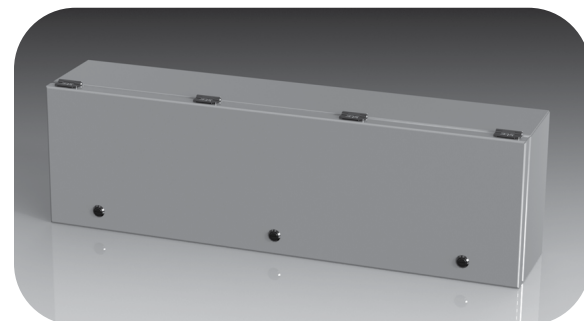
## IS4 Industry Standards

NEMA Type 3R, 4, 12 & Type 13  
UL Listed Type 3R, 4 & 12  
CSA Type 3R, 4 & 12  
IEC 60529 IP66

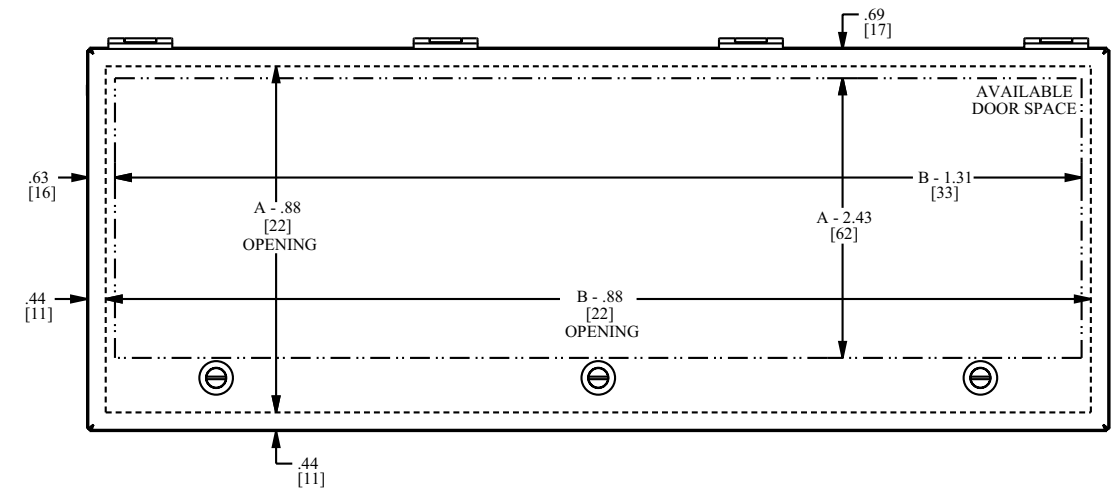
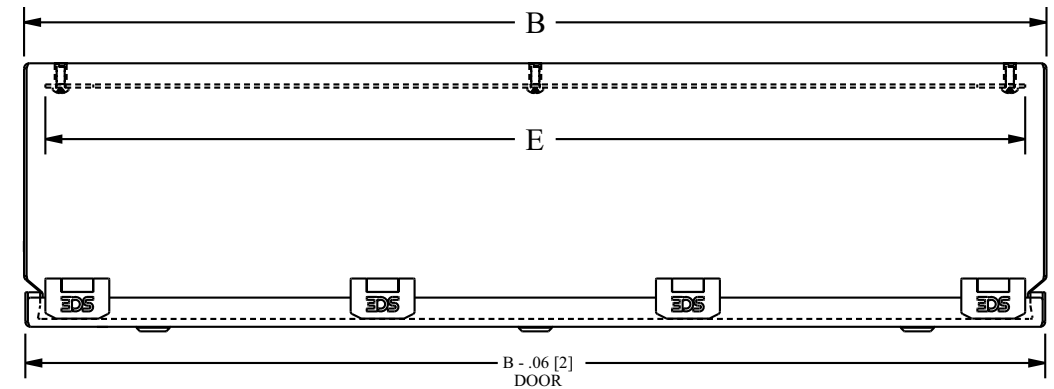
\*\*\*To maintain Type 3R listing, drainage is required. Install equally rated drainage device or drill a 1/8 to 1/4 inch hole in the bottom center of the enclosure, approximately 1 inch from the right, and 1 inch from the left for drainage, use listed rain-tight or wet location hubs. Drip shield over the door is recommended for all outdoor applications.

Enclosure Product Code E1

Catalog No.	Height (A)	Width (B)	Depth (C)	Industry Standard	Subpanel (P3)		
					Catalog No.	Panel Height (D)	Panel Width (E)
<a href="#">SCE-L9126ELJ</a>	9.00	12.00	6.00	IS4	<a href="#">SCE-9P12L</a>	8.00	11.00
<a href="#">SCE-L9128ELJ</a>	9.00	12.00	8.00	IS4	<a href="#">SCE-9P12L</a>	8.00	11.00
<a href="#">SCE-L9186ELJ</a>	9.00	18.00	6.00	IS4	<a href="#">SCE-9P18L</a>	8.00	17.00
<a href="#">SCE-L9188ELJ</a>	9.00	18.00	8.00	IS4	<a href="#">SCE-9P18L</a>	8.00	17.00
<a href="#">SCE-L9246ELJ</a>	9.00	24.00	6.00	IS4	<a href="#">SCE-9P24L</a>	8.00	23.00
<a href="#">SCE-L9248ELJ</a>	9.00	24.00	8.00	IS4	<a href="#">SCE-9P24L</a>	8.00	23.00
<a href="#">SCE-L9306ELJ</a>	9.00	30.00	6.00	IS4	<a href="#">SCE-9P30L</a>	8.00	29.00
<a href="#">SCE-L9308ELJ</a>	9.00	30.00	8.00	IS4	<a href="#">SCE-9P30L</a>	8.00	29.00
<a href="#">SCE-L9366ELJ</a>	9.00	36.00	6.00	IS4	<a href="#">SCE-9P36L</a>	8.00	35.00
<a href="#">SCE-L9368ELJ</a>	9.00	36.00	8.00	IS4	<a href="#">SCE-9P36L</a>	8.00	35.00



# ENVIROLINE® SERIES TROUGH JUNCTION ENCLOSURES TECHNICAL DATA



## LATCH NOTES:

1. One latch centered on the door horizontally if width is  $\leq 14.00$  [356]
2. Two latches located 3.00 [76] from sides of door if width is  $> 14.00$  [356]
3. An additional latch is centered horizontally if width is  $> 20.00$  [508]

